



AusPress®

COPPER

Install Guide



profile



DN65 - 100

Start here

Start to install quicker...

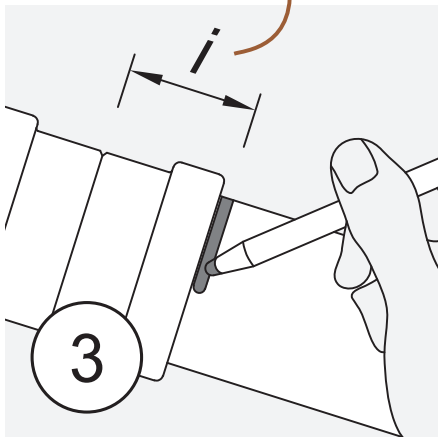
AusPress Copper is installed easily and quickly using a Press Tool to form a permanent joint. Installation only by a qualified & licensed plumber to AS3500 and AS5601.

Check for suitability...

Both copper material and the rubber ring seal must be checked if suitable for the possible fluids and exterior environment conditions.

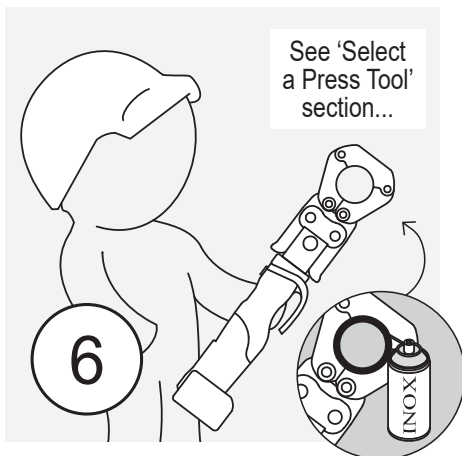
If in doubt, ask us!

See over for depth measurement.



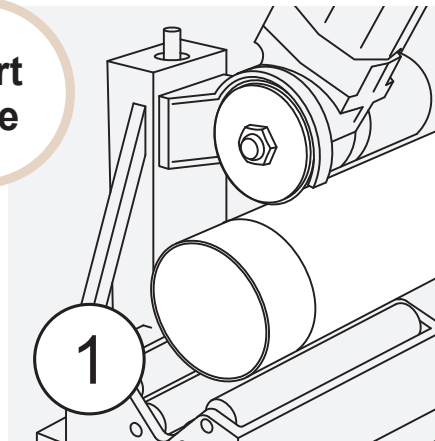
Mark the Insertion Depth "i"

Measure and text mark the insertion depth (socket depth) from the end of the tube.



Press Tool Selection

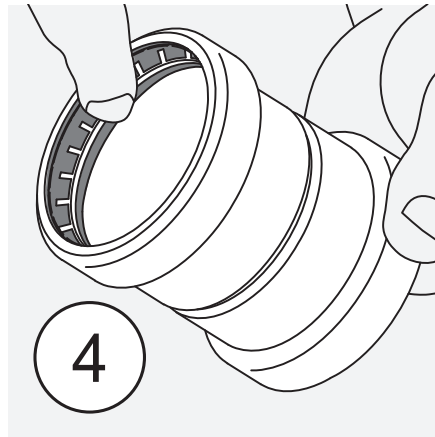
Use a press tool, jaw or collar to suit the fitting, dimension and application pressures. Ensure press zone is Innox lubricated each press.



Cut to Length

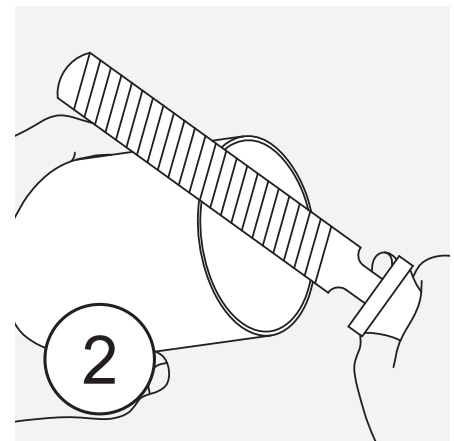
Cut the tube at right angles using a tube cutter or fine tooth saw.

Type A or B copper tube complying to AS1432 is suitable. Ensure tube end is true round.



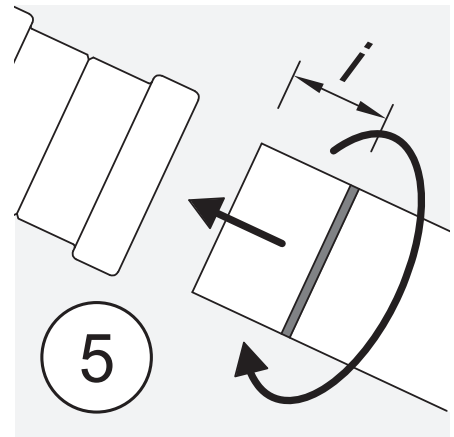
Inspect Fitting & Ring Seals

Check that the rubber ring seal is not damaged and both fitting & seal are free of debris.



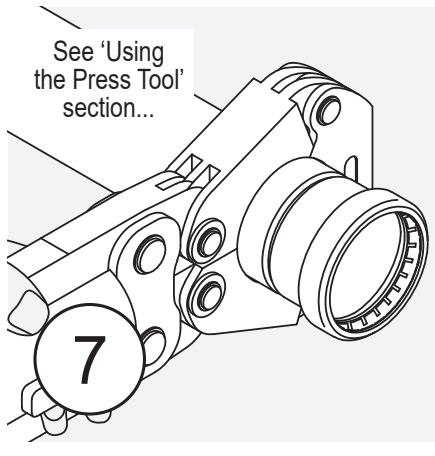
Deburr Tube

Deburr both inside & outside edges of tube to prevent damage to the ring seal of the fitting.



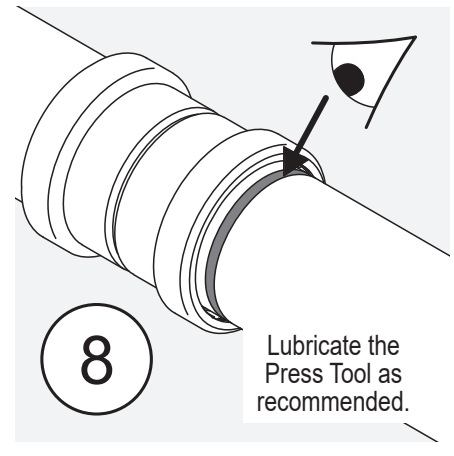
Join the Tube & Fitting

Insert the tube into the fitting press socket, turning slightly until it reaches the previously marked insertion depth.



Press the Join

Align the press jaw or collar with the press socket and start the press to join the fitting & tube.



Check & Complete

Visually inspect the pressed fitting & that the insertion mark is aligned with the end of the socket.

Check the Ring Seal

Product performance specifications only - always install to meet local and AS/NZ standards.



General Working Pressure
1,600 kpa (232 psi) max.

Gas installations 200 kpa
(29 psi) max (AS 5601).



Black Ring Seal:
For Potable Water
-20 to +95°C

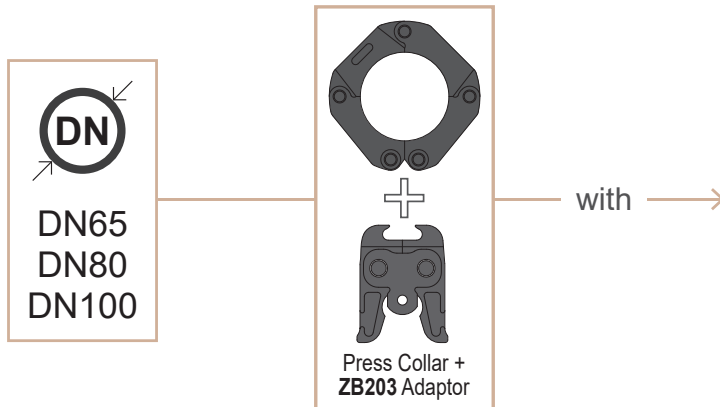


Yellow Ring Seal:
For Gas Only
(NG or LPG)

Note: Don't use oils or grease to lubricate the ring seal. Not suitable for medical gases, refrigeration, air conditioning, acetylene, fuels & diesel. Contact us for other chemical suitability before installing.

Press Tool Options

AusPress Copper fittings are compatible with V-Profile tool options below.

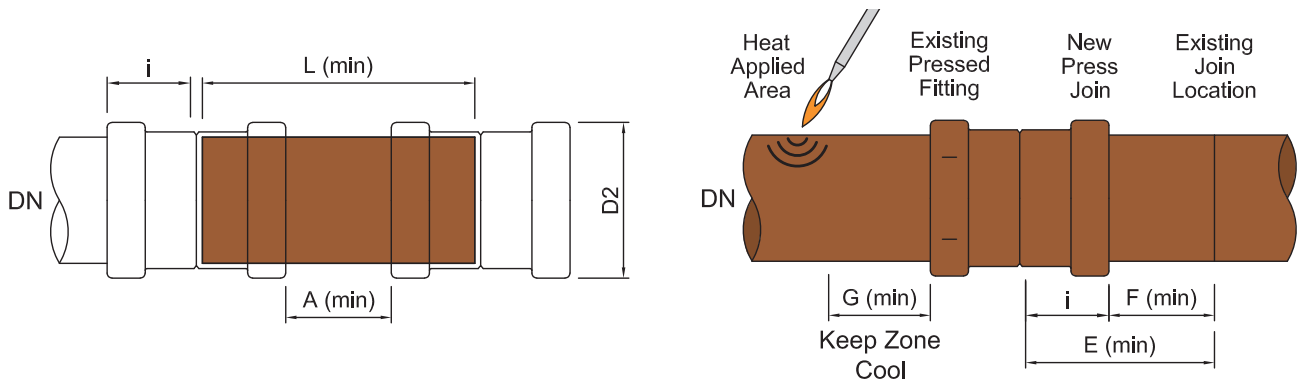


- 32kN Tool Options**
- Novopress ACO203
 - Novopress ACO203-XL
 - Vetec CPN700
 - Milwaukee M18 Press Force
 - Rothenberger Romax 3000
 - Rothenberger Romax 4000
 - KemPress KPL
 - Viega Pressgun 4B
 - Viega Pressgun 5
 - Viega Pressgun 6
 - Klauke UAP3L
 - Klauke UAP4L
 - Rems Akku-Press

Refer to tool manufacturer for ability, suitability and follow recommended use instructions.

Fitting Clearances

Measurements are dependant on the actual fitting dimensions and the Press Tool used to join. Confirm clearances with your particular installation as these may change.



During brazing or soldering we recommend protecting adjacent existing press fittings by keeping them cool (eg wrap the press fitting with a wet cloth) during these processes.

DN	Profile	<i>i</i>	L	A	D2	E	F	G
65	V	42	109	25	79	67	25	1600
80	V	48	126	30	90	78	30	2000
100	V	60	150	30	116	90	30	2500

V-Profile fittings shown are measured from the end of the fitting.

Measurements are dependant on the actual fitting dimensions and the Press Tool used to join. Confirm clearances with your particular installation as these may change.

Note: This document is only intended as a guide and users must refer to our full product catalogue and technical information for further detailed information.

tube insertion depth measurement.