



AusPress®

STAINLESS

Install Guide



profile



10 - 168mm

Start here

Start to install quicker...

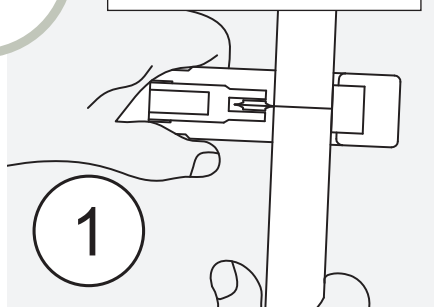
AusPress press-fit is installed easily and quickly using a Press Tool to form a permanent 'M' profile join. Installation only by a qualified & licensed plumber to AS3500 and AS5601.

Check for suitability...

Both the stainless material and the rubber ring seal must be checked if suitable for the possible fluids and exterior environment conditions.

If in doubt, ask us!

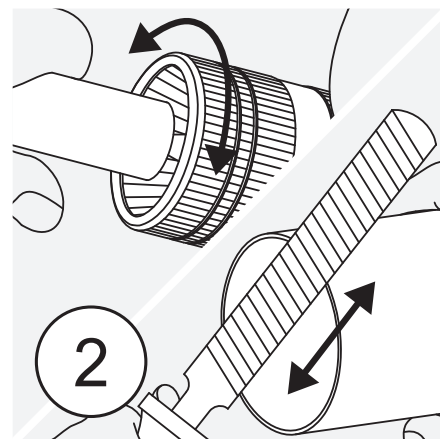
Keep your tools for stainless separate - don't use blades & files on different metals!



Cut to Length

Cut the tube square using a tube cutter with an 'inox' suitable blade.

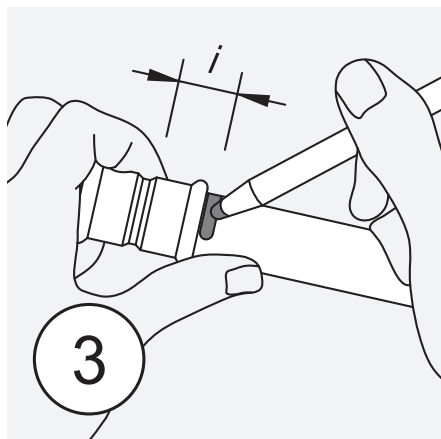
For larger sizes, cut square with an 'inox' blade using a stainless rotary cutter or 5" thin blade grinder disc.



Deburr Tube

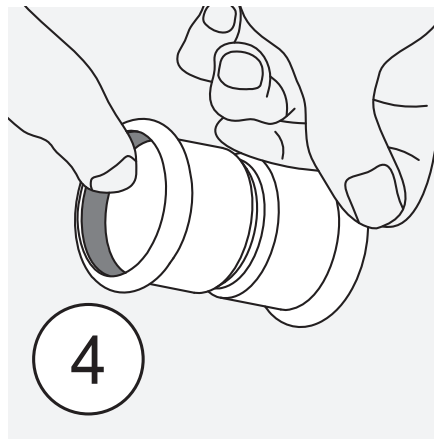
Deburr both inside & outside edges of tube ends to avoid cutting the ring seal on insertion.

For large sizes, use a half round smooth file reserved for stainless.



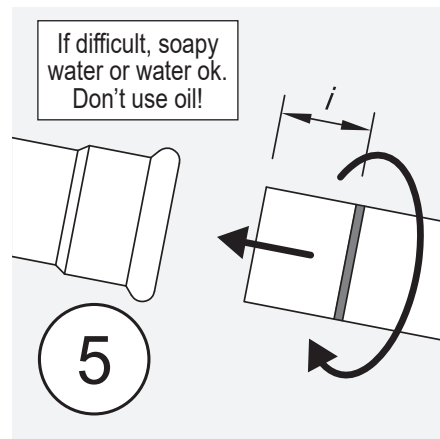
Mark the Insertion Depth "i"

Measure and permanent texta mark the insertion depth (socket depth) from the end of the tube.



Inspect Fitting & Ring Seals

Check that the rubber ring seal is not damaged, the correct type (colour) and both fitting & seal are free of debris.



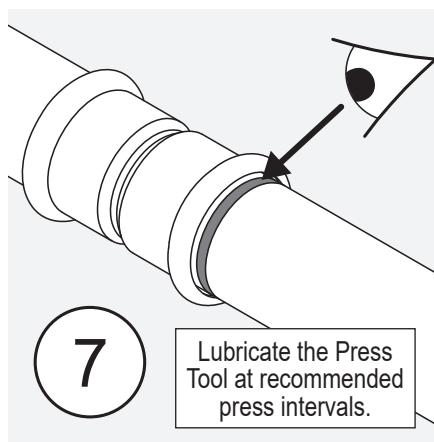
Join the Tube & Fitting

Insert the tube into the fitting press socket, turning slightly until it reaches the previously marked insertion depth.



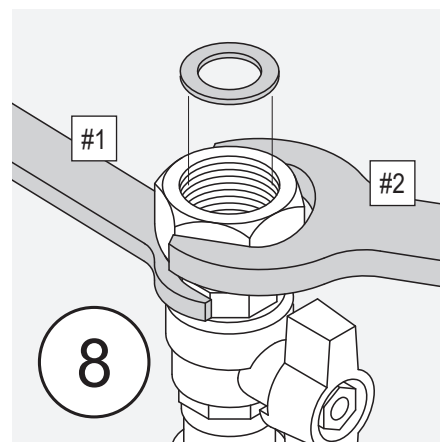
Press Tool Selection

Use a press tool, jaw or collar to suit the fitting, dimension and application pressures. Ensure press zone is Inox lubricated each press.



Check the Press

Visually inspect the pressed fitting & that the insertion mark is aligned with the end of the socket.



Threaded Ends

Tighten threads with the fitting supported, don't tighten against the pressed join alone.